

COASTAL STATE'S PATHWAY FOR EXTENDED CONTINENTAL SHELF SUBMISSION.

Article 76 - UNCLOS

SUBMISSION OF PRELIMINARY INFORMATION

A coastal State is obliged to submit preliminary information of its ECS claim to the Commission on the Limits of the Continental Shelf (CLCS) 10 years after the Convention enters into force for that State.



The Division for Ocean Affairs and the Law of the Sea maintains a list submissions made by coastal States listed in the order received.



PREPARE FOR FULL SUBMISSION



A coastal State is required to submit particulars of its ECS claims to the CLCS along with supporting scientific and technical data. This involves:

- Engaging technical advice and consultants.
- Providing multi-beam bathymetry data.
- Seismological evidences
- Analysis using ECS software

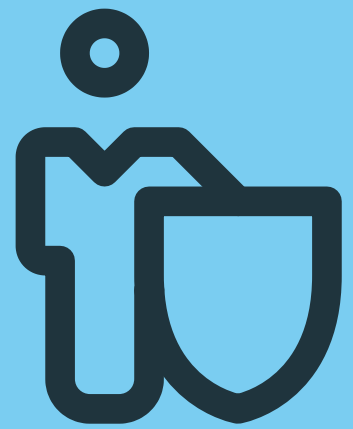


EVALUATION BY SUB-COMMISSION

A sub-commission will evaluate an ECS claim in two stages;

Stage 1: An initial examination conducting a preliminary analysis including the test of appurtenance and estimate time to review data and prepare recommendation to the Commission.

Stage 2: Main scientific and technical examination based on scientific and technical guideline of the Commission. May include request for additional data, information and presentation of views by the coastal States.



The sub-commission makes recommendations for the Commission



CONSIDERATION OF COMMISSION

The Commission consider and can approve or amend the recommendations of the sub-commission.



OBLIGATION BY COASTAL STATES

The coastal states deposits information permanently describing its ECS on the basis of the Commission's recommendations.

